



Cornerstones

Queen Victoria and her family

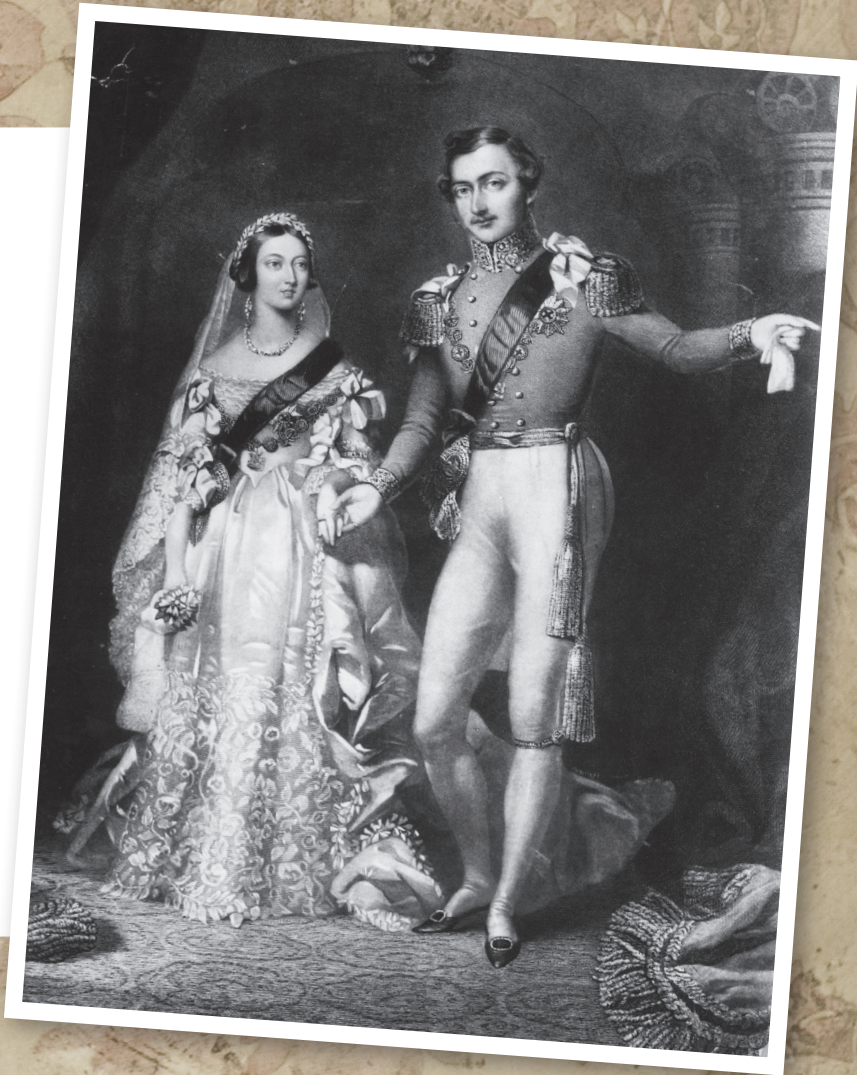
Images used from: Wikimedia Commons/Public domain

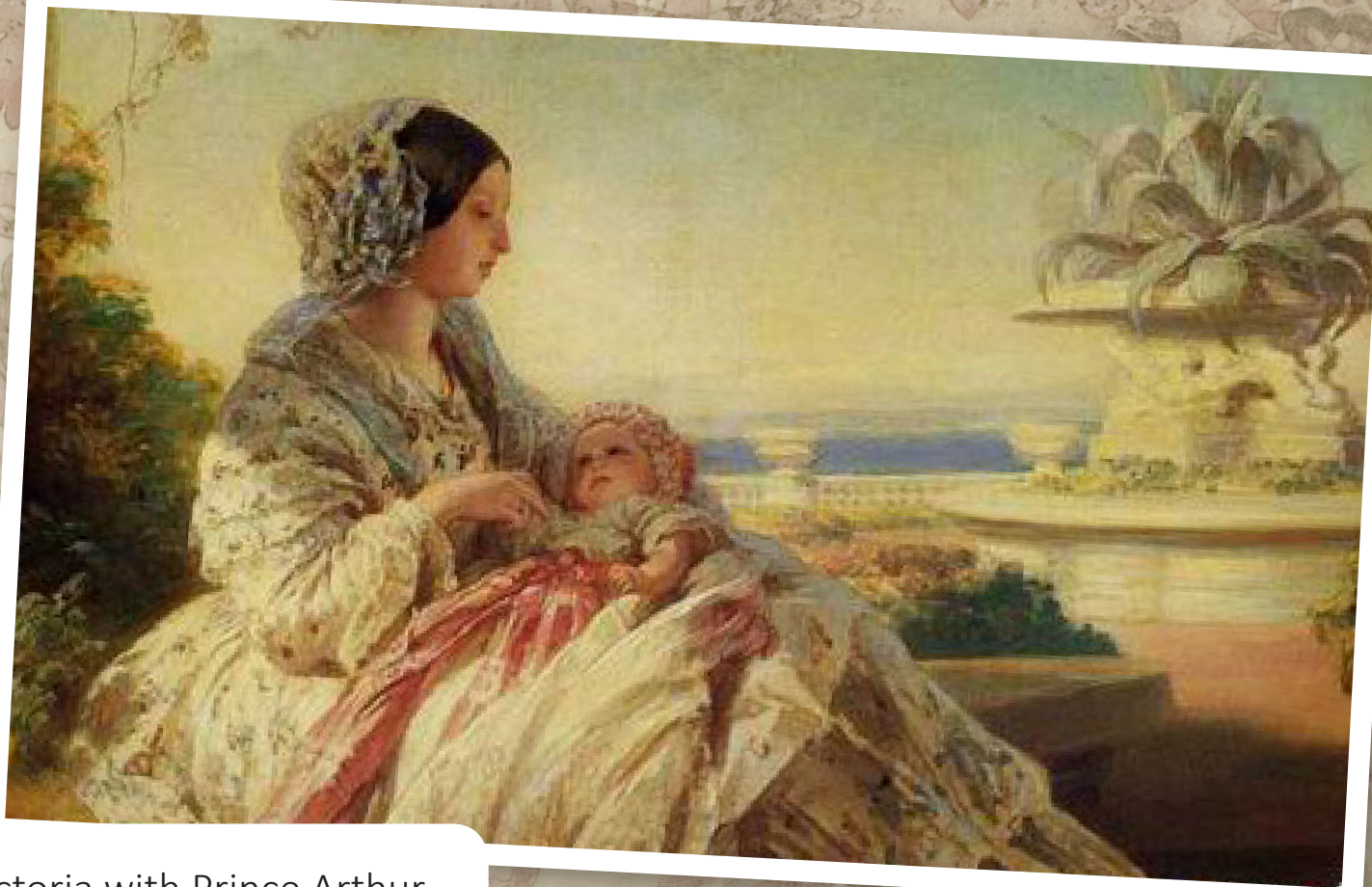
Images of the past

Queen Victoria married Prince Albert on 10th February 1840. They had nine children.

Look at the following **paintings** and **photographs**.

Consider what this type of **evidence** tells us about her family, the past, and how the Royal Family wanted to be **portrayed**.





Queen Victoria with Prince Arthur,
born in 1850.

Images used from: Wikimedia Commons/Public domain



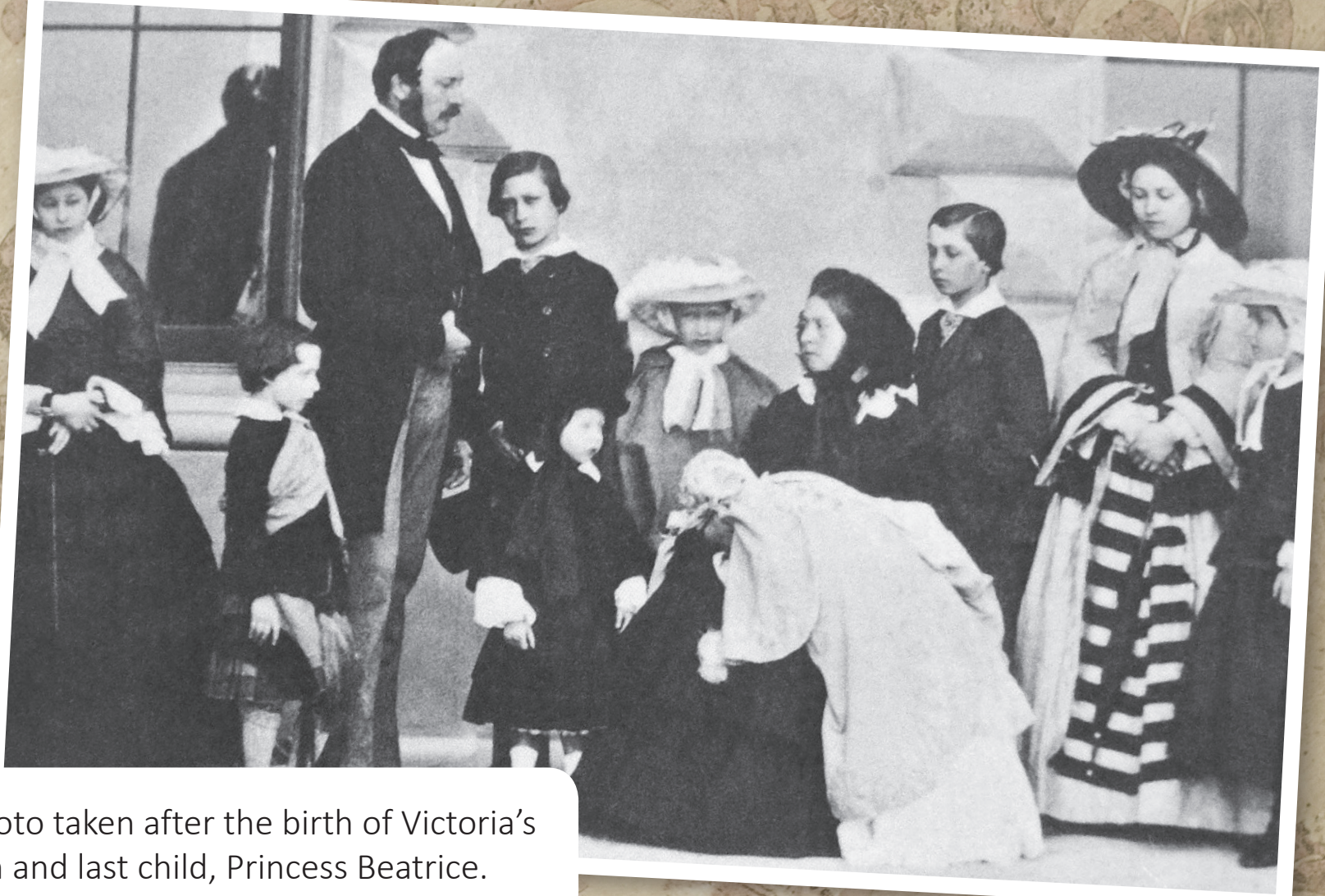
A painting of the Royal Family in 1846 – one of the Queen's favourite portraits.

Images used from: Wikimedia Commons/Public domain

Queen Victoria and Prince Albert in 1854, seven years before he died.



Images used from: Wikimedia Commons/Public domain



A photo taken after the birth of Victoria's ninth and last child, Princess Beatrice.

Images used from: Wikimedia Commons/Public domain



A drawing from 1877 of Queen Victoria's extended family.

Images used from: Wikimedia Commons/Public domain



Queen Victoria and her youngest daughter, Princess Beatrice.

Images used from: Wikimedia Commons/Public domain



The Royal grandchildren
in 1875.

Images used from: Wikimedia Commons/Public domain

Queen Victoria and Prince Albert's
family tree, dated 1887.



Images used from: Wikimedia Commons/Public domain